

G5 Displays



JOHN DEERE

Software Update 23-3

Release Notes for G5 Universal, G5 CommandCenter™, G5^{Plus} Universal, G5^{Plus} CommandCenter™

10.27.3135-111

JD Display OS installation time: Approximately 20 minutes, with no existing data. Installation time will vary depending on the amount of existing data and the software version currently on the display. The latest packages for the G5 Displays can be downloaded and installed over-the-air or using a USB drive and John Deere Software Manager. Reference “Software Installation Instructions” in the Software Updates section of the StellarSupport™ website for more information.

Machine Application Software Updates

Machine applications are located under Machine Settings in the G5 menu. A John Deere dealer will be required to install any required updates to machine application software using Service ADVISOR™.

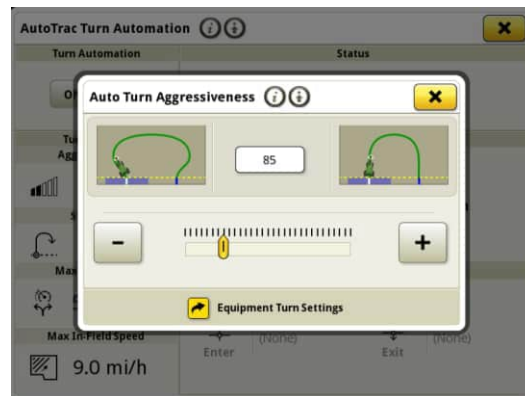
Other Controller Software Updates

Software for the controllers listed below can be updated using the G5 Display.

Controller
Application Controller 1100
Application Controller 1100 (S.N. PCXL01C201000-)
Application Controller 1120
Application Controller 1120 (S.N. PCXL02C201000-)
AutoTrac™ Universal 100
AutoTrac™ Universal 200
AutoTrac™ Universal 300
GreenStar™ Rate Controller Dry
GreenStar™ Rate Controller
StarFire™ 3000 Receiver
StarFire™ 6000 Receiver
StarFire™ 7000 Receiver
AutoTrac™ Vision Guidance Camera

Resolved Issues:

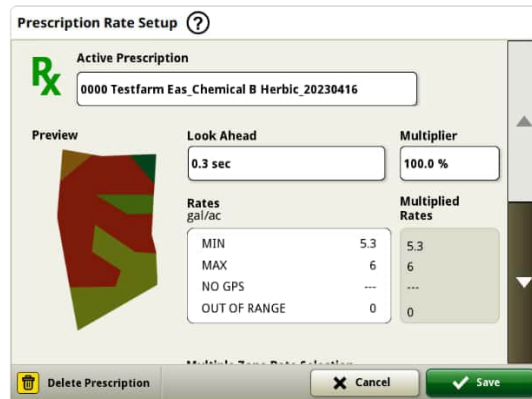
- Setup Files with corrupted machine profiles cause display to be unable to connect to implements
- MY22 and newer 4xxR/6xxR Sprayers AutoTrac performance not optimal with Float Tires (480mm and wider).
- MY22 and newer STS Hagie Sprayers AutoTrac over-corrects when acquiring the guidance line when using AWS (All Wheel Steer).
- AutoPath plan should generate sooner in large complex fields with small track spacing. However, if being used in conjunction with AutoTrac Turn Automation, users may notice Turn Automation distance to next turn showing “---” until processing of AutoPath tracks for Turn Automation is complete.
- AutoTrac Turn Automation lightbulb shaped turns can be performed by adjusting the Turn Aggressiveness lower, this was not possible before. This now matches more closely to what is shown on display.



- G5 Displays experiencing license loss after updating to 23-3 version 10.27.3135-109
- G5 Displays experiencing a rolling reboot after updating to 23-2
- This release contains important software security enhancements.

New Features and Improvements:

- **Zero Touch Prescription Setup**
- Operators will no longer need to manually enter prescription details with the 23-3 JD Display OS bundle update. Prescription details can be included when planning work in the Work Planner tool within the Operations Center, allowing operators to pull into the field, start the work plan, and begin operation without the need to enter details manually on the display, as the prescription rate setup will be done automatically.



- **1 Series Round Baler**

In May of 2023 we released Documentation and Detection for 1 Series Large Square Balers. With the 23-3 JD Display OS bundle release we will bring those same capabilities to Ottumwa built Model Year 2024 (MY24) 1 Series Round Balers from John Deere. Compatible model numbers will include the 451E, 451M, 451R, 461R, 461M, 551M, 561M, and 561R round balers. Customers will be able to quickly set up their MY24 1 Series Round Baler and have access on their display to numerous important data points detected on their baled crop. The data that is collected can be synced or manually uploaded to the customers Operations Center account.



- **Equipment Manager – 1 Series Round Baler**

With 23-3 JD Display OS, customers can detect and easily set up their MY 24 1 Series Round Baler equipment within the Equipment Manager and Work Setup apps. Customers can assign crop types, varieties, and desired harvest units to the job in the field.

- **Documentation – 1 Series Round Baler**

Customers will now be able to accumulate and analyze data for their MY 24 1 Series Round Baler operation with their G5 display operating on 23-3 software. In each field the customer can identify how many bales they have made, the total weight of crop baled, and the average moisture readings for that crop, among many more attributes. Similar totals will also be available at the singular bale level displaying bale diameter, average moisture, and more.

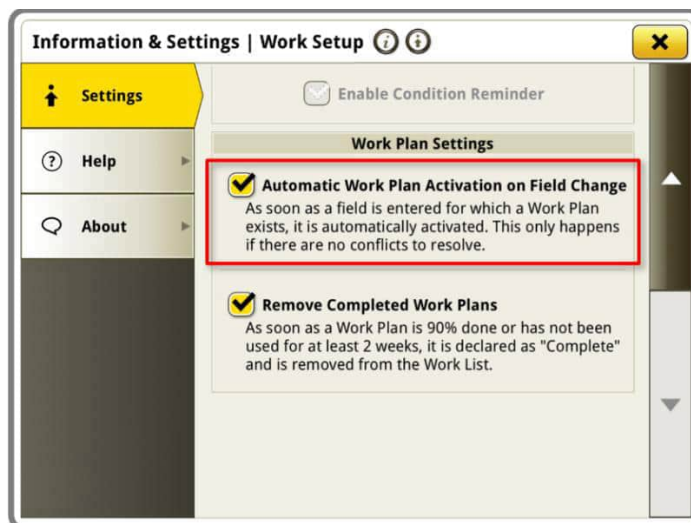


- **Auto Start Work Plans on Field Change**

Starting with JD Display OS 23-3 and newer software versions, a setting named “Auto Start Work Plan on Field Change” will be included. This setting will automatically start or switch Work Plans when entering a field, provided that there are no conflicts within the field (e.g., multiple work plans, existing unfinished work plan, etc.), and specific conditions are met:

- The operation of the work plan matches that of the connected implement
- The planned variety, product, rate, and operator match the currently set variety, product, rate, and operator
- In the case of a virtual implement profile is complete

This feature is turned off by default and can be activated within the advanced settings of the Work Setup app.

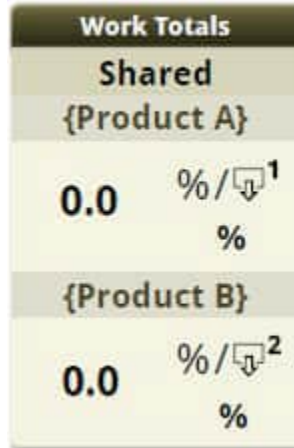


- **Work Totals – See & Spray™ Broadleaf Weed Pressure**

Customers operating a See & Spray™ equipped John Deere Sprayer and G5 display running 23-3 JD Display OS will see a new Work Total item. The new line item will represent the percentage of vegetation that See & Spray™ has identified as non-crop and further classified as a broadleaf non-crop. Along with the overall Weed Pressure reading this feature can help show farmers and operators real data on how much of their weed pressure is from broadleaf plants as opposed to grasses.

- **See & Spray™ Percent Tank Applied**

With the 23-3 JD Display OS update See & Spray™ equipped John Deere Sprayers will have a new layout manager module to choose from. This module will indicate the percent area applied for each tank or product a customer is utilizing.



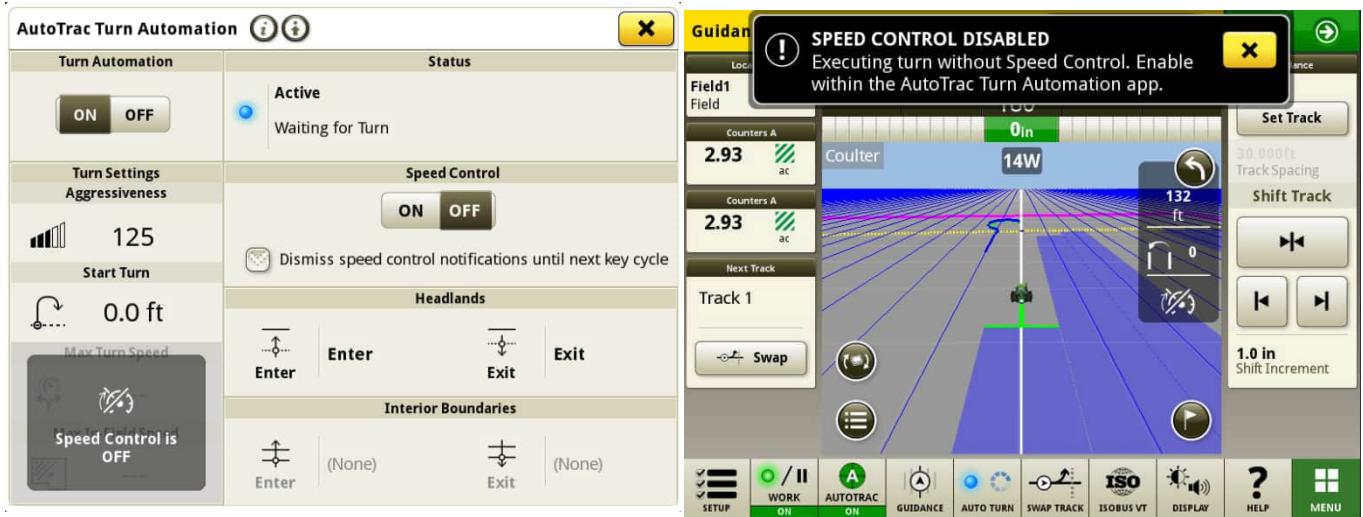
- **Map Legend See & Spray™ Weed Pressure Default Values**

Customers operating a See & Spray™ equipped John Deere Sprayer and G5 display running 23-3 JD Display OS will see new default values for their Weed Pressure Map Legend. In previous versions of the JD Display OS the default maximum and minimum values for Weed Pressure has been 100% and 0% respectively. With the 23-3 JD Display OS update these default values will now be 20% and 2%. Customers can still customize their maximum and minimum values, just the default values within the map legend will change.



- **AutoTrac Turn Automation Enable Tractor Turn Automation without Speed Control**

Customers can choose to disable speed control by toggling it off in Turn Automation Settings. If a tractor does not support speed control, speed control will default to off. Users are responsible to control speed safely during end turns and will receive a warning as the turn approaches that speed control is disabled. This warning can be turned off if the user desires in turn automation settings.



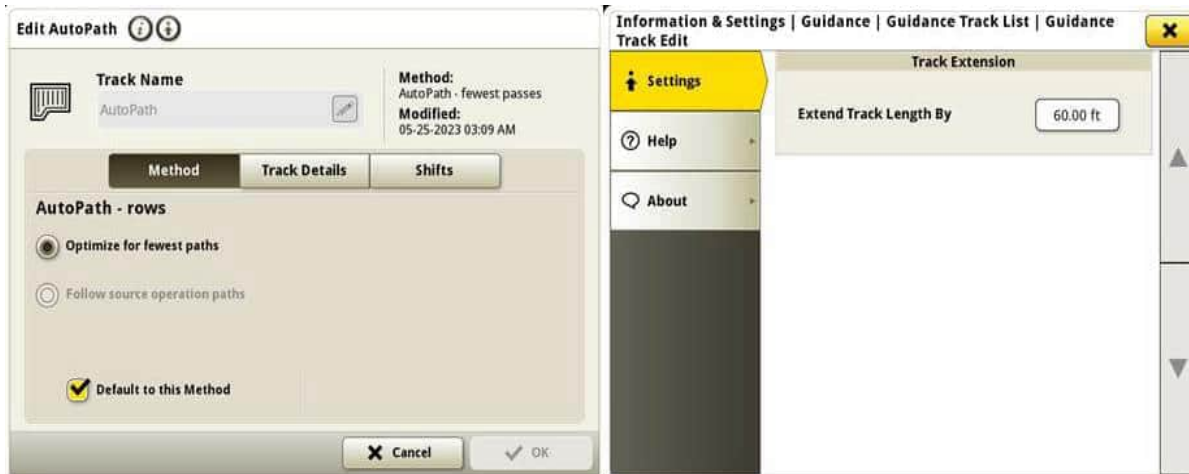
- **AutoPath Source Rules Updated**

Prior to 23-3 software, AutoPath Source Operations were blocked to not allow "Application on Application" or "Planting on Planting" as an example. Customers can now use AutoPath to add additional fertilizer or apply pre-planting herbicide before planting the field. Enable AutoPath Application to use Application source data. Prior to 23-3 software, AutoPath for Application required Planting source data.

Note: Source Operation Data must have been recorded with an Implement Receiver. So this would not allow a Self-Propelled Sprayer ("Application") data to be used for other AP Operations because it is not using an Implement Receiver.

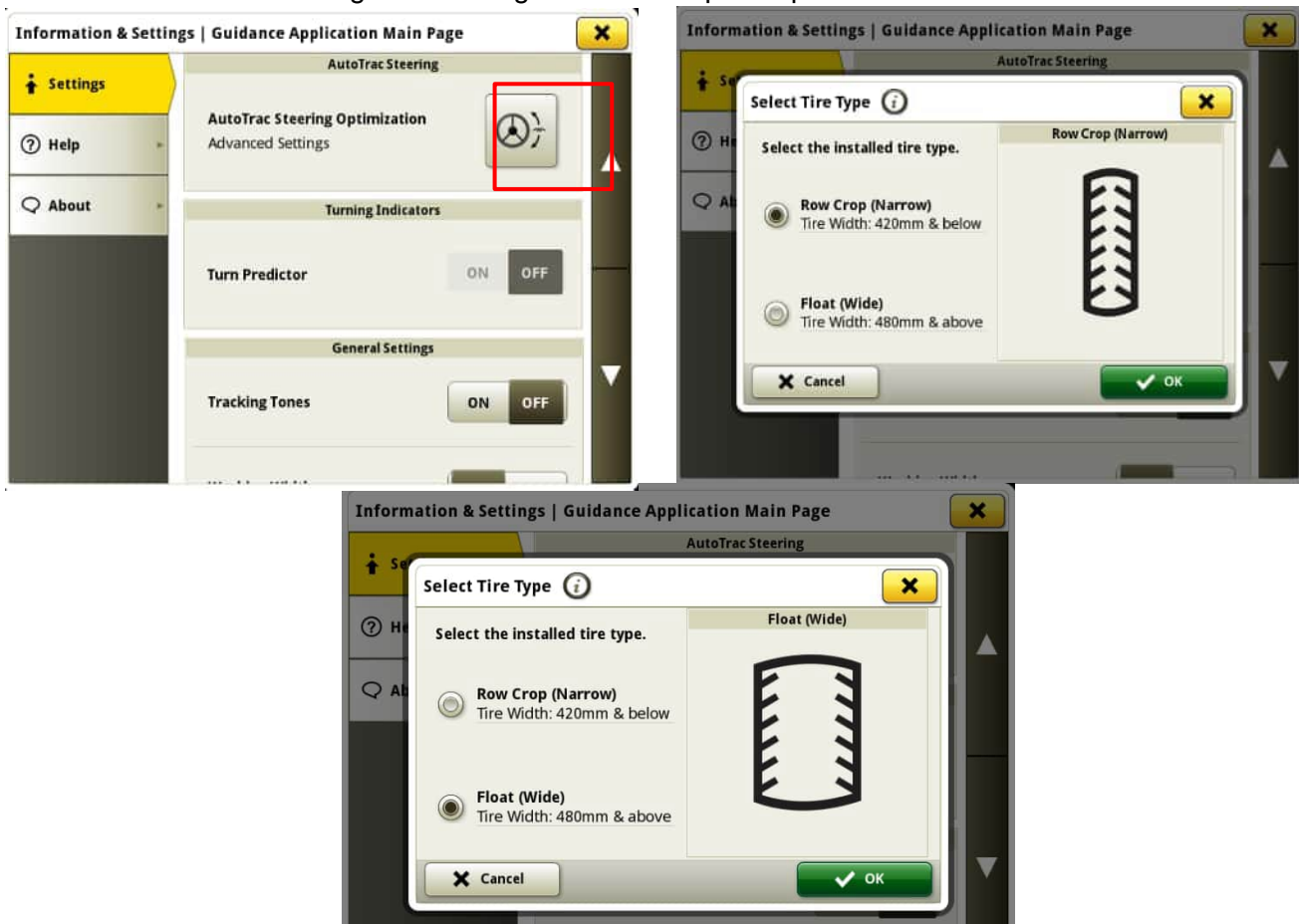
- **AutoPath Track Extensions**

AutoPath Track Extensions can be lengthened based on customer preference. This will allow users to adjust the end row extensions in headlands to better align vehicle and implement onto the next line/next pass into the field. This adjustment can be found in the Edit AutoPath and Map Details Advanced Settings page and can be adjusted for 0 to 100m.



- **MY22 and newer 4xxR/6xxR Sprayers AutoTrac Tire Type Selection**

Added tire type selection (Float or Row Crop) on MY22 and newer 4xx/6xxR series sprayers to improve AutoTrac performance. Tire selection is found in AutoTrac Steering Optimization page. User can select the current tire type being used to optimize the machines steering performance. If tires are changed through the year, user needs to change this setting to maintain optimal performance.



- **Machine Sync Prioritize Previously Connected Networks in Network List**

Network list will show connected machine first in the list and other machine sync networks (i.e. Leader2, Leader 3, etc..) that have been used before will be shown at top of the list. Other networks that are not being used for Machine Sync will fall lower in the list. This makes it easier to search for a connection if needed to manually select connection.



Additional Information and Training Resources

Operator's Manual

A copy of the G5 Operator's Manual is available within the Help Center application on the display with JD Display OS software version 10.16.1400-85 and newer. This content is updated with software updates as needed. Always read the latest Operator's Manual prior to operation. To obtain a copy of the Operator's Manual, see your dealer or visit techpubs.deere.com.

Onscreen Help

Onscreen help supplements the information found in the Operator's Manual. The onscreen help can be referenced by opening the Help Center application on the display or by pressing the Information icon at the top of any page to view relevant help information for that page. G5 Display Onscreen Help is also available for reference at displaysimulator.deere.com.

Training Simulators

To learn more about the G5 Displays, there is an online training simulator available at displaysimulator.deere.com

Release Notice

These are the JD Display OS and AMS Applications software update release notes for the G5 Displays. Release notes can be found on <http://www.stellarsupport.com/>. Note: Your use of the software is governed by the End User License Agreement included with the software.

Copyright © 1996-2024 Deere & Company