

G-SERIES 6WD  
**MOTOR GRADERS**



**JOHN DEERE**

622GP / 672GP / 772GP / 872GP



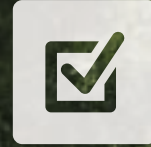
**DECIDE HOW  
WORK GETS DONE**



**ONE C**



*MORE  
CONTROL  
OPTIONS*



*FACTORY EQUIPPED  
WITH OPTIONAL  
SMARTGRADE™*

**DEERE**

**MANY OPTIONS.  
CLEAR CHOICE.**



*THE FUTURE OF GRADING*  
***TAKES A FORWARD LEAP.***

Inspired by the best ideas of customers like you, John Deere motor graders are known for their exceptional control and effortless grading precision. And now, we've made some additions to our list of featured firsts. Along with Customer Advocate Group-tested dual-joystick controls, wide-ranging grade-control system options including integrated SmartGrade models, and a number of industry-exclusive automation updates, it's just one more example of innovations we've accelerated to help your operation jump to the next level.



**WHEN YOU ASK, WE LISTEN: THE 622GP GRADER.**

Our competitively priced 622GP offers contractors, townships, and municipalities the grader they've been asking for. With just the right amount of power and fuel savings of up to 10 percent over our larger models, it's equipped — not stripped — to include many of the same features found on its larger siblings, including a superior cooling package and ground-level service.

# DO YOUR LEVEL BEST.

## BETTER SPECS, MORE OPTIONS HELP IMPROVE YOUR GRADES

With their exceptional balance, improved performance specs, and more maximum capability, GP-Series Graders are always right on the money, especially for contractors, counties/municipalities, or land-leveling applications.

### Innovation in action

New John Deere automation features designed to move you ahead in a big way include Machine-Damage Avoidance, Machine Presets, Auto-Articulation, Auto-Gain for Cross Slope, and Auto-Pass (see page 6 for all the details).

### Move ahead

Auto-Shift PLUS provides simplified machine operation without using the inching pedal.

### More horsepower and torque

Increased engine horsepower, torque, and blade pull produce generous power and lugging ability, to deliver more power to the ground, easily pull through tough spots, or tackle steep hills.

### Power for the job

GP-Series Graders deliver the right amount of power, right when you need it. Horsepower and torque are optimized for each gear to maximize performance, no matter your application.

### Unlimited grade control

Industry-first John Deere SmartGrade Motor Graders are fully integrated and calibrated from the factory, arriving at your jobsite ready to work. In-cylinder position sensing allows the machine to stay on grade no matter what blade pitch, articulation angle, or circle offset you're running.

### Smarter from day one

Integration of SmartGrade into the cabin and structures helps shield key grade-control components such as wire harnesses and sensors from damage and theft. And without external grade-control components to impede maneuverability, final-grade machines can be involved earlier and more effectively in site development.

### Six-wheel drive

Equip these six-wheel-drive models with Precision mode for maximum productivity in all soil conditions. Six-wheel drive is adjustable on the fly to meet changing soil conditions.



**INDUSTRY-FIRST AUTOMATION  
FEATURES & SMARTGRADE  
CONFIGURATIONS**

# GET OUT AHEAD OF IT

## THE JOHN DEERE DIFFERENCE.

Set yourself apart from the competition. Because with industry-exclusive Auto-Gain for Cross Slope, Auto-Pass, and Auto-Shift PLUS, it's push-button easy to move ahead. Our automation advantages are also available as field kits that can be unlocked on SmartGrade models.



**1** Exclusive **Auto-Shift PLUS** allows operators to work without using the inching pedal.

**2** **Auto-Gain for Cross Slope** automatically adjusts gain settings based on ground speed to maximize performance.

**3** **Auto-Articulation** allows the operator to increase the maneuverability of coordinated steering and articulation while using only the joystick-steering function to steer and operate other necessary functions without manually articulating the machine.

**4** **Machine-Damage Avoidance** eliminates the risk of blade damage to machine structures during any operation, even complex orientations.

**5** Exclusive **Auto-Pass** makes grading easy by automatically placing the blade on the ground and activating the grade-control system (when equipped) at the start of the pass, then automatically raising and resetting the blade at the end of it.

**6** Preparing the machine for transport is push-button easy with **Machine Presets**. Stow the blade and ripper, turn on the lights including the hazards, and enable Auto-Shift with one button press, for speedy jobsite transitions.

### Optional premium circle

Featuring a fully sealed bearing and pinion that run smoother and quieter, this industry-leading design reduces operating costs while delivering 40-percent more torque and 15-percent more speed than a traditional circle. Contractors no longer have to compensate for wear in the circle, improving accuracy when using a grade-control system — especially impactful when coupled with the innovative John Deere SmartGrade system. And greasing intervals of only four zerks every 500 hours make the premium circle essentially maintenance free.



# TAKE CONTROL

## WITHOUT LIFTING A FINGER.

Our GP-Series Graders give you more choice of how work gets done. Opt for dual-joystick controls or choose state-of-the-art fingertip armrest controls. Or have the best of both worlds — a field kit allows you to easily swap between the two. And based on customer feedback, all models still have a steering wheel. The choice is yours.



### Joystick option

Our dual-joystick option provides intuitive control with minimal hand motion during direction changes and gear shifts. Dual-joystick controls help reduce operator fatigue by eliminating the twisting wrist motion or uncomfortable combinations common to other joystick systems.

### Precise control with less fatigue

Instead of twisting the controller, actuate articulation and circle-rotate functions using proportional roller switches.

### Return-to-straight

At the touch of a button, return-to-straight automatically straightens an articulated frame, speeding work cycles.

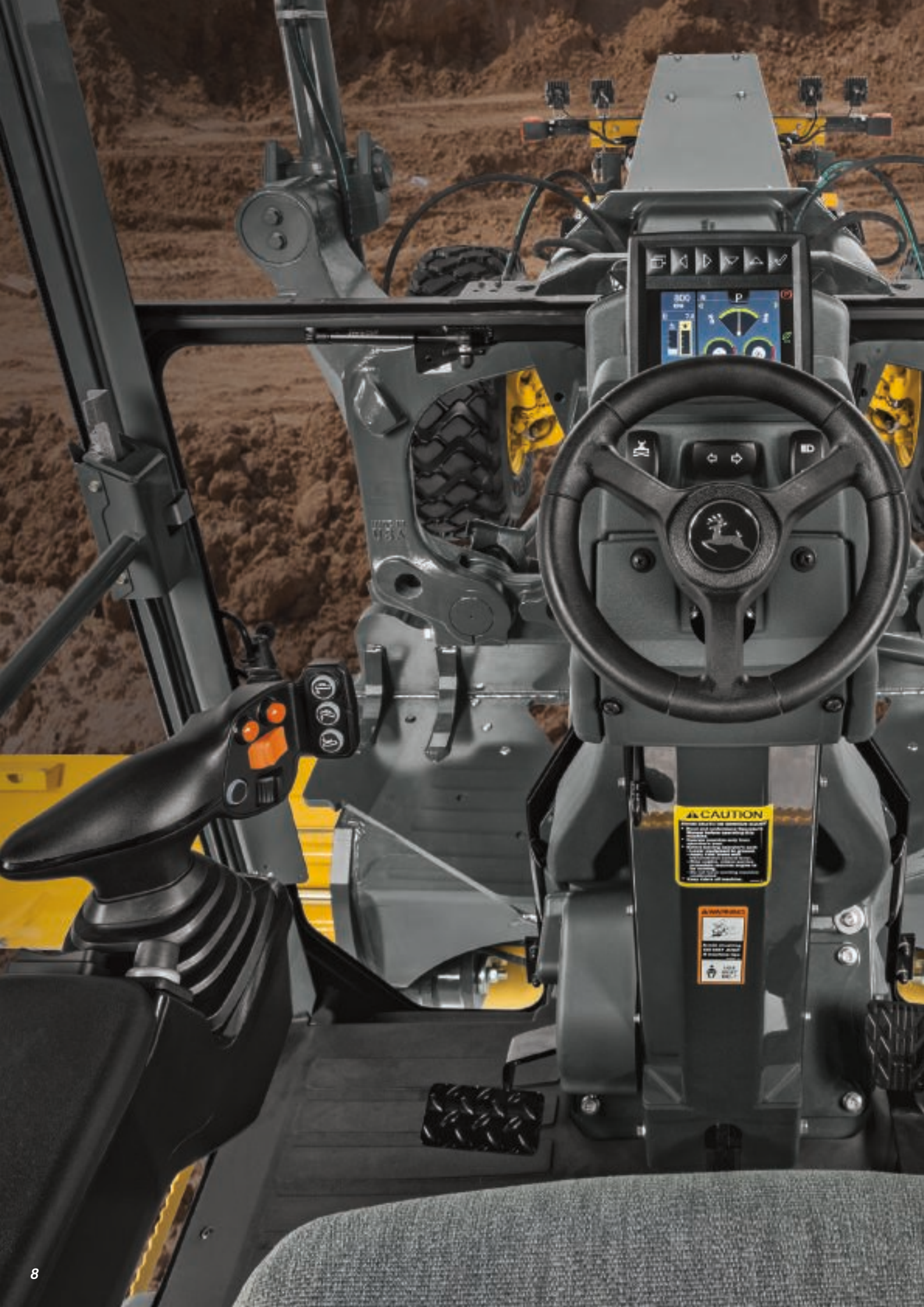
### Automated cross slope

Both dual-joystick controls and fingertip armrest controls come equipped with cross slope and are ready to run the grade-control system of your choice. Automated cross slope simplifies holding a consistent slope by reducing operation to a single lever. This feature helps veteran operators be their best and new operators get up to speed more quickly.



## CHOICE OF CONTROLS

- DUAL-JOYSTICK CONTROLS
- FINGERTIP ARMREST MOUNTED
- STEERING WHEEL (STANDARD ON ALL MODELS)







## EXPANSIVE VISIBILITY

# LOOK FORWARD TO MORE PRODUCTIVITY.

It's easy to see why GP-Series Graders have become a favorite on a wide range of jobsites, with their expansive views, an LCD high-visibility monitor, and smooth gate-less shifting.

---

### Exceptional view

Visibility is virtually unobstructed, with an all-around clear view to the heel and toe, and behind the moldboard. Even the area beneath the front axle is clearly within sight, for greater awareness of oncoming obstacles.

### Store your stuff

Generous storage space includes numerous overhead compartments, plus a place for a beverage, cooler, cell phone, and other carry-ons.

### Lighting the way

Courtesy lighting stays on after machine shutdown and then automatically turns itself off, making it safer to exit the cab after dark, while conserving battery power.

### Easy-access park brake

Sealed-switch module provides push-button control of vital machine functions, including the parking brake, for more convenient access and easier operation.

### Streamlined access to vital info

LCD hi-vis monitor provides intuitive, push-button access to vital machine data displayed via simple, easy-to-navigate icons and menus.

### Now you see it

Contractors will benefit from improved visibility to the tandems while working around obstacles such as water mains and hubs.



# *NO TIME TO LO*

***UPTIME ISN'T EVERYTHING,  
IT'S THE ONLY THING.***

Downtime means lost productivity and profits. Which is why GP-Series Graders are loaded with durability-enhancing advantages that help deliver years of trouble-free service.

**STANDARD  
REVERSING FAN**  
(OPTIONAL ON 622GP)



**COSE.**

**Fuel-efficient, cool-on-demand fan with reversing option**

Variable-speed hydraulically driven fan runs only as fast or as often as necessary to keep things cool. Helps conserve power and fuel, while reducing noise. Standard reversible fan (optional on 622GP) makes for quick core cleanout in high-debris applications.

**Multipurpose for your multipurposes**

Redesigned heavy-duty front and rear axles combined with increased maximum operating weights enable more versatility and better blade pull for utilizing attachments.

**Easy-to-clean cooling package**

Cooling package eliminates stacked coolers. Combined with the hinged swing-out fan, core access is quick and cleaning is easy.

**Auto shutdown reduces fuel use and wear**

Auto shutdown turns off the engine after an operator-determined idle period, saving fuel and reducing wear on engine, transmission, and hydraulic components.

**Save fuel with Eco mode**

When engaged, Eco mode reduces engine rpm in gears 1–5, optimizing fuel usage and decreasing operating costs by up to 10 percent.

---

Get valuable insight with  
***PRECISION CONSTRUCTION***

This suite of construction technology delivers **Productivity Solutions** to help you get more done, more efficiently. In-base JDLink™ connectivity provides machine location, utilization data, and alerts to help you maximize productivity and efficiency. Other productivity solutions include grade-management options for multiple machine forms and payload weighing for wheel loaders and articulated dump trucks.

To maximize uptime and lower costs, JDLink also enables **John Deere Connected Support.™** John Deere's centralized Machine Health Monitoring Center analyzes data from thousands of connected machines, identifies trends, and develops recommended actions, called Expert Alerts, to help prevent downtime. Dealers use Expert Alerts to proactively address conditions that may otherwise likely lead to downtime. Your dealer can also monitor machine health and leverage remote diagnostics and programming capability to further diagnose problems and even update machine software without a time-consuming trip to the jobsite.



***TIME TO TAKE SIDES.***

---

### Fast, simple ground-level access

All daily service points, including fueling and diesel exhaust fluid (DEF), are grouped on the left side for quick and convenient ground-level access. On the right side, maintenance personnel will appreciate the easy-access engine oil, fuel, hydraulic, transmission, and differential filter bank.



### Connected to customers

The Wirtgen Group has become known worldwide for technological innovations and machine solutions for the road construction and rehabilitation industries. You can rely on complete customer-focused support for your John Deere equipment from the extensive Wirtgen Group dealer network.



# 622GP SPECIFICATIONS

Engine		622GP	
Manufacturer and Model	John Deere PowerTech™ PSS 6.8L		
Non-Road Emission Standard	EU Stage V		
Cylinders	6		
Displacement	6.8L		
Net Engine Power			
Gear 1	127 kW		
Gear 2	138 kW		
Gear 3	149 kW		
Gear 4	157 kW		
Gear 5	157 kW*		
Gear 6	160 kW*		
Gear 7	164 kW*		
Gear 8	168 kW*		
Net Peak Torque	1035 Nm		
Net Torque Rise	38%		
Engine Bore and Stroke	107 x 127 mm		
Aspiration	Series turbocharged, charge-air cooled		
Lubrication	Full-flow spin-on filter and integral cooler		
Air Cleaner With Restriction Indicator	Dual element, dry		
<i>*6WD not available.</i>			
Cooling			
Engine Coolant, Extended Life, Rating	-37 deg. C		
Powertrain			
<b>6-Wheel Drive</b>	Automatic dual-path hydrostatic drive; increases tractive effort and front-end control; includes separate left and right systems with variable-displacement pumps, axial-piston wheel motors, and freewheel at transport speeds; operator-selectable 15-position rotary aggressiveness control and inching capability down to 0 mph; precision mode (propelled by front wheels only)		
Effective Gears	1-4 forward and reverse		
Precision Mode			
Effective Gears	1-3 forward only		
Operating Speeds	0.4-8.0 km/h		
Hydrostatic Pumps (2 each)	53 cm <sup>3</sup>		
Wheel Motors	57 cm <sup>3</sup>		
Final Reduction	38.7:1		
<b>Transmission</b>	Direct-drive John Deere PowerShift Plus™, modulated shift-on-the-go, Event-Based Shifting (EBS), inching pedal; independent transmission reservoir with separate filtration and cooling system with 117-L/min. gear pump		
Gears			
Forward	8		
Reverse	8		
<b>Maximum Travel Speeds</b>	<i>No tire slip at 2,180 rpm, 14R24 tires</i>	<b>Maximum Travel Speeds (continued)</b>	<i>No tire slip at 2,180 rpm, 14R24 tires</i>
Gear 1	4.0 km/h	Gear 5	16.4 km/h
Gear 2	5.6 km/h	Gear 6	23.2 km/h
Gear 3	7.7 km/h	Gear 7	32.3 km/h
Gear 4	10.9 km/h	Gear 8	45.5 km/h*
<i>*Maximum speed may be reduced for specific regions.</i>			
<b>Front Axle</b>	Heavy-duty welded fabrication		
Oscillation (total)	32 deg.		
Wheel Lean Angle (each direction)	20 deg.		
<b>Differentials</b>	Spiral bevel; hydraulically actuated, clutch type can be applied on-the-go; selectable manual or automatic differential lock		
<b>Steering (all models include steering wheel)</b>	All-hydraulic power-frame articulation for maneuverability and productivity; crab steering reduces side drift, positions tandems on firm ground, and increases side-slope stability; automated return-to-straight feature		
Turning Radius (front steer and articulation)	7.21 m		
Articulation (both right and left)	22 deg.		
<b>Final Drives</b>	Inboard-mounted planetary sealed in cooled, filtered oil		
<b>Brakes</b>	Foot-controlled, hydraulically operated, multiple wet-disc brakes sealed in pressurized, cooled, filtered oil; both independent systems effective on all 4 tandem wheels		
Primary and Secondary Brakes	Hydraulically actuated, inboard of tandem pivot, self-adjusting, sealed in cooled and filtered oil, multi-disc (ISO 3450)		
Parking Brake	Automatically spring applied, hydraulically released, oil cooled, self-adjusting (ISO 3450)		

While general information, pictures, and descriptions are provided, some illustrations and text may include product options and accessories NOT AVAILABLE in all regions, and in some countries products and accessories may require modifications or additions to ensure compliance with the local regulations of those countries.

# 622GP SPECIFICATIONS



<b>Hydraulics</b>		<b>622GP</b>
Type	Closed-center, pressure-compensated load-sensing (PCLS), variable-displacement piston pump	
Maximum Pump Flow	212 L/min.	
Maximum System Pressure	18 961 kPa	
Pump Displacement	90 cm <sup>3</sup>	
<b>Blade Function</b>		
All-hydraulic, industry-standard lever placement of blade-function controls; includes float position; 7 discrete saddle positions		
<b>Blade Range</b>		
Lift Above Ground	490 mm	
Blade Side Shift (right or left)	678 mm	
Pitch at Ground Line		
Forward	42 deg.	
Back	5 deg.	
Shoulder Reach Outside Wheels (frame straight, right or left)	2048 mm	
Bank Cut Angle (right or left)	90 deg.	
<b>Blade Pull</b>		
At Maximum Operating Weight	20 412 kg	
<b>Electrical</b>		
Solid-state load center and sealed-switch module		
Voltage	24 volt	
Number of Batteries	2	
Battery Capacity	1,400 CCA	
Reserve Capacity	440 min.	
Amp-Hour Rating	224 amp-hour	
Alternator Rating	200 amp	
<b>Lights</b>	Driving lights; high- and low-beam LED headlights; front and rear LED turn signals and marker lights; LED brake and hazard warning lights	
<b>Mainframe</b>		
Type	Welded box construction	
Width (minimum)	307 mm	
Height (minimum)	307 mm	
Thickness		
Side	16 mm	
Top and Bottom Plate	23 mm	
Modulus		
Minimum Vertical Section	1445 cm <sup>3</sup>	
Average Vertical Section at Saddle	2245 cm <sup>3</sup>	
<b>Draft Frame (drawbar)</b>		
Welded box construction machined for flatness and double ball-and-socket pivot connection		
<b>Circle</b>		
Welded construction, heat-treated, and machined for flatness		
	<i>Standard Circle</i>	<i>Premium Circle</i>
Circle Diameter	1524 mm	1524 mm
Rotation	360 deg.	360 deg.
Surface	Quick-change bronze or nylon wear inserts	Sealed and lubricated roller element slewing bearing
Pinion/Ring-Gear Connection	Adjustable backlash and open for serviceability	No adjustment; fully sealed and lubricated
Drive	Hydraulic motor and worm gear with positive lock	Hydraulic motor and worm gear with positive lock
Slip Clutch	Option	Standard
Circle Side Shift (right and left)	787 mm	787 mm
<b>Moldboard</b>		
High-strength, pre-stressed for higher strength; wear-resistant, high-carbon steel and reversible end bits; blade side-shift wear system includes quick-change replaceable wear inserts and quick-adjust jackscrew system		
Base Length	3.66 m	
Height (measured along arc, including cutting edge)	610 mm	
Thickness	22 mm	

While general information, pictures, and descriptions are provided, some illustrations and text may include product options and accessories NOT AVAILABLE in all regions, and in some countries products and accessories may require modifications or additions to ensure compliance with the local regulations of those countries.

# 622GP

<b>Cutting Edge</b>		<b>622GP</b>
Dura-Max™ through-hardened steel edge		
Thickness	16 mm	
Width	152 mm	
<b>Scarifier</b>		
<i>Mid-mount</i>		
Type	Radial linkage, with NeverGrease™ pin joints; V-type manual 3-pitch position with hydraulic float	
Width of Cut	1.19 m	
Number of Shanks/Teeth	11	
Lift Above Ground	335 mm	
Maximum Depth	325 mm	
Shank		
Spacing	117 mm	
Size	25 x 76 mm	
<b>Front Dozer Blade</b>		
Parallel linkage, hydraulic float		
Lift Above Ground	706 mm	
<b>Rear Ripper/Scarifier</b>		
Parallel linkage, with NeverGrease pin joints, hydraulic float, and integrated hitch		
	<i>Ripper</i>	<i>Scarifier</i>
Width of Cut	2.21 m	2.18 m
Number of Shanks/Teeth	3 (maximum capacity 5)	None standard (maximum capacity 9)
Lift Above Ground	602 mm	810 mm
Maximum Depth	426 mm	323 mm
Force		
Penetration	9494 kg	—
Pry-Out	12 387 kg	—
Shank Size	61.5 x 133 mm	25 x 76 mm
<b>Operator Station</b>		
Low-profile cab with ROPS (ISO 3471-2008) and FOPS (ISO 3449-2005)		
<b>Tires/Wheels</b>		
	<i>14R24 on 254-mm Rim</i>	<i>17.5R25 on 356-mm Rim</i>
Wheel Tread on Ground	2.08 m	2.16 m
Overall Width	2.49 m	2.64 m
Ground Clearance (front axle)	587 mm	587 mm
<b>Serviceability</b>		
<b>Refill Capacities</b>		
Fuel Tank	416.5 L	
Diesel Exhaust Fluid (DEF) Tank	22.5 L	
Cooling System	51.0 L	
Engine Oil With Filter	31.5 L	
Transmission Fluid	28.4 L	
Differential Housing	38.0 L	
Tandem Housings (each)	74.0 L	
Circle Gearbox	5.7 L	
Hydraulic Reservoir	60.5 L	
<b>Operating Weights</b>		
With Full Fuel Tank, 3.66-m x 610-mm x 22-mm Moldboard With 152-mm x 16-mm Cutting Edges, 14R24 L2 Tires, and 79-kg Operator		
Front	4781 kg	
Rear	11 984 kg	
Total	16 765 kg	
Typical Operating Weight With Front Dozer Blade, Rear Ripper/Scarifier, and Other Equipment		
Front	5754 kg	
Rear	13 846 kg	
Total	19 600 kg	
Maximum Operating Weight	22 680 kg	
*With 13-24 Bias L2 tires.		

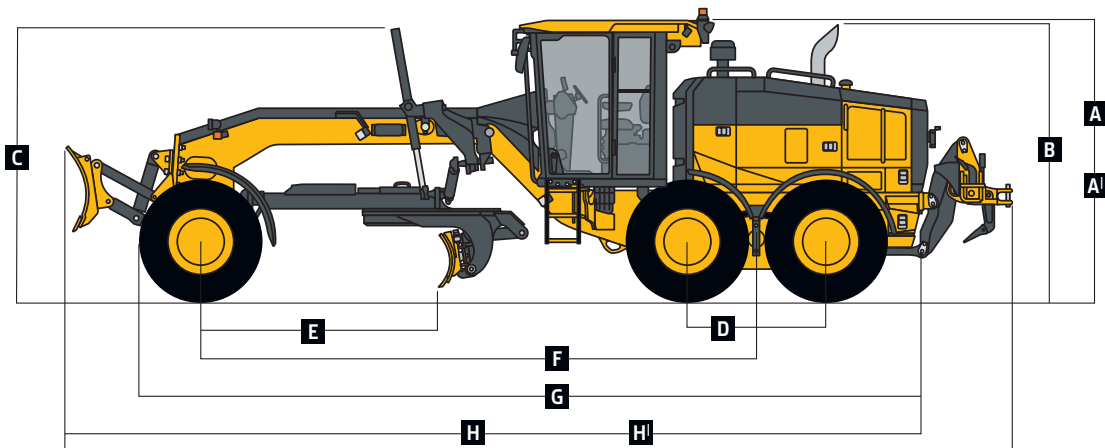
While general information, pictures, and descriptions are provided, some illustrations and text may include product options and accessories NOT AVAILABLE in all regions, and in some countries products and accessories may require modifications or additions to ensure compliance with the local regulations of those countries.



Option Weights	622GP
Moldboards With Through-Hardened Dura-Max Cutting Edge	
3.66 m x 610 mm x 22 mm With 152-mm x 16-mm Cutting Edge and 16-mm Hardware	0 kg
3.66 m x 610 mm x 22 mm With 203-mm x 19-mm Cutting Edge and 16-mm Hardware	45 kg
4.27 m x 610 mm x 22 mm With 152-mm x 16-mm Cutting Edge and 16-mm Hardware	105 kg
4.27 m x 610 mm x 22 mm With 203-mm x 19-mm Cutting Edge and 16-mm Hardware	1574 kg
Extensions, 610 mm (right or left)	
For Use With 610-mm Moldboards	116 kg
Overlay End Bits, Reversible (one pair)	
For 152-mm Cutting Edge	19.5 kg
For 203-mm Cutting Edge	23 kg
Circle-Drive Slip Clutch	9 kg
Circle	
Standard	0 kg
Premium	289 kg
Moldboard Impact-Absorption System	43 kg
Ripper/Scarifier, Rear Mounted With Hitch and Ripper Shanks (3)	1139 kg
Scarifier Shanks With Teeth (9 for rear ripper/scarifier)	68 kg
Rear Counterweight With Integral Rear Hitch	727 kg
Rear Hitch	54.4 kg
Push Block, Front	907 kg
Scarifier, Mid-Mount With Teeth (11)	1481 kg
Front Dozer Blade	1039 kg
<b>Machine Dimensions</b>	
<b>A</b> Height to Top of Cab	3.18 m
<b>A'</b> Height to Top of Full-Height Cab	3.40 m
<b>B</b> Height to Top of Exhaust	3.10 m
<b>C</b> Height to Top of Blade-Lift Cylinders	3.05 m
<b>D</b> Tandem Axle Spacing	1.54 m
<b>E</b> Blade Base	2.57 m

Option Weights (continued)	622GP
Tires	
14.00-24, 12 PR G2	-220.4 kg
17.5-25, 12 PR G2/L2	-106 kg
14.00-R24, Radial, G2/L2 General Purpose	0 kg
14.00-R24, Radial, G2/L2 Snow	40.8 kg
17.5-R25, Radial, L2 General Purpose	51.7 kg
17.5-R25, Radial, G2/L2 Snow	95.3 kg
17.5-R25, Radial, G3/L3 General Purpose	141.5 kg
Multi-Piece Rims	
254 mm x 610 mm	0 kg
356 mm x 635 mm	85.3 kg
Fenders	
Front	99 kg
Rear	141 kg
Low Cab With Opening Front and Side Windows	14.5 kg
Premium Air-Suspension, Heated Seat With Adjustable Arm- and Headrests	13 kg
Coolant Heater	4 kg
Quick Service	11 kg
Secondary Steering	26 kg
Beacon Bracket	8 kg
Fire Extinguisher	14.5 kg
Lighting Packages – 16 LED Lights	7 kg
Front and Rear Light Bar Extensions	48 kg
Auxiliary Hydraulic Control Valve Section and Controls	7 kg
Hydraulics for Front-Mounted Equipment	9 kg
<b>Machine Dimensions (continued)</b>	
<b>F</b> Wheelbase	6.16 m
<b>G</b> Overall Length	8.89 m
<b>H</b> Overall Length With Push Block and Ripper	9.99 m
<b>H'</b> Overall Length With Front-Mounted Blade and Ripper	10.60 m

For Overall Width see Tires/Wheels on page 16.



While general information, pictures, and descriptions are provided, some illustrations and text may include product options and accessories NOT AVAILABLE in all regions, and in some countries products and accessories may require modifications or additions to ensure compliance with the local regulations of those countries.



# 672GP SPECIFICATIONS

<b>Engine</b>		<b>672GP</b>	
Manufacturer and Model	John Deere PowerTech™ PSS 9.0L		
Non-Road Emission Standard	EU Stage V		
Cylinders	6		
Displacement	9.0L		
<b>Net Engine Power</b>			
Gear 1	149 kW		
Gear 2	157 kW		
Gear 3	168 kW		
Gear 4	172 kW		
Gear 5	179 kW		
Gear 6	187 kW		
Gear 7	190 kW		
Gear 8	190 kW*		
Net Peak Torque	1292 Nm		
Net Torque Rise	50%		
Engine Bore and Stroke	118 x 136 mm		
Aspiration	Series turbocharged, charge-air cooled		
Lubrication	Full-flow spin-on filter and integral cooler		
Air Cleaner With Restriction Indicator	Dual element, dry		
*6WD not available.			
<b>Cooling</b>			
Engine Coolant, Extended Life, Rating	-37 deg. C		
<b>Powertrain</b>			
<b>6-Wheel Drive</b>		Automatic dual-path hydrostatic drive; increases tractive effort and front-end control; includes separate left and right systems with variable-displacement pumps, axial-piston wheel motors, and freewheel at transport speeds; operator-selectable 15-position rotary aggressiveness control and inching capability down to 0 mph; precision mode (propelled by front wheels only)	
Effective Gears	1-7 forward and reverse		
<b>Precision Mode</b>			
Effective Gears	1-3 forward only		
Operating Speeds	0.4-8.0 km/h		
Hydrostatic Pumps (2 each)	53 cm <sup>3</sup>		
Wheel Motors	57 cm <sup>3</sup>		
Final Reduction	38.7:1		
<b>Transmission</b>		Direct-drive John Deere PowerShift Plus™, modulated shift-on-the-go, Event-Based Shifting (EBS), inching pedal; independent transmission reservoir with separate filtration and cooling system with 117-L/min. gear pump	
<b>Gears</b>			
Forward	8		
Reverse	8		
<b>Maximum Travel Speeds</b>		<i>No tire slip at 2,180 rpm, 14R24 tires</i>	
Gear 1	4.0 km/h		
Gear 2	5.6 km/h		
Gear 3	7.7 km/h		
Gear 4	10.9 km/h		
		<b>Maximum Travel Speeds (continued)</b> <i>No tire slip at 2,180 rpm, 14R24 tires</i>	
	Gear 5 16.4 km/h		
	Gear 6 23.2 km/h		
	Gear 7 32.3 km/h		
	Gear 8 45.5 km/h*		
*Maximum speed may be reduced for specific regions.			
<b>Front Axle</b>		Heavy-duty welded fabrication	
Oscillation (total)	32 deg.		
Wheel Lean Angle (each direction)	20 deg.		
<b>Differentials</b>		Spiral bevel; hydraulically actuated, clutch type can be applied on-the-go; selectable manual or automatic differential lock	
<b>Steering (all models include steering wheel)</b>		All-hydraulic power-frame articulation for maneuverability and productivity; crab steering reduces side drift, positions tandems on firm ground, and increases side-slope stability; automated return-to-straight feature	
Turning Radius (front steer and articulation)	7.21 m		
Articulation (both right and left)	22 deg.		
<b>Final Drives</b>		Inboard-mounted planetary sealed in cooled, filtered oil	
<b>Brakes</b>		Foot-controlled, hydraulically operated, multiple wet-disc brakes sealed in pressurized, cooled, filtered oil; both independent systems effective on all 4 tandem wheels	
Primary and Secondary Brakes	Hydraulically actuated, inboard of tandem pivot, self-adjusting, sealed in cooled and filtered oil, multi-disc (ISO 3450)		
Parking Brake	Automatically spring applied, hydraulically released, oil cooled, self-adjusting (ISO 3450)		

While general information, pictures, and descriptions are provided, some illustrations and text may include product options and accessories NOT AVAILABLE in all regions, and in some countries products and accessories may require modifications or additions to ensure compliance with the local regulations of those countries.

# 672GP SPECIFICATIONS



<b>Hydraulics</b>		<b>672GP</b>
Type	Closed-center, pressure-compensated load-sensing (PCLS), variable-displacement piston pump	
Maximum Pump Flow	212 L/min.	
Maximum System Pressure	18 961 kPa	
Pump Displacement	90 cm <sup>3</sup>	
<b>Blade Function</b>		
All-hydraulic, industry-standard lever placement of blade-function controls; includes float position; 7 discrete saddle positions		
<b>Blade Range</b>		
Lift Above Ground	490 mm	
Blade Side Shift (right or left)	678 mm	
Pitch at Ground Line		
Forward	42 deg.	
Back	5 deg.	
Shoulder Reach Outside Wheels (frame straight, right or left)	2048 mm	
Bank Cut Angle (right or left)	90 deg.	
<b>Blade Pull</b>		
At Maximum Operating Weight	22 453 kg	
<b>Electrical</b>		
Solid-state load center and sealed-switch module		
Voltage	24 volt	
Number of Batteries	2	
Battery Capacity	1,400 CCA	
Reserve Capacity	440 min.	
Amp-Hour Rating	224 amp-hour	
Alternator Rating	200 amp	
<b>Lights</b>	Driving lights; high- and low-beam LED headlights; front and rear LED turn signals and marker lights; LED brake and hazard warning lights	
<b>Mainframe</b>		
Type	Welded box construction	
Width (minimum)	307 mm	
Height (minimum)	307 mm	
Thickness		
Side	16 mm	
Top and Bottom Plate	23 mm	
Modulus		
Minimum Vertical Section	1445 cm <sup>3</sup>	
Average Vertical Section at Saddle	2245 cm <sup>3</sup>	
<b>Draft Frame (drawbar)</b>		
Welded box construction machined for flatness and double ball-and-socket pivot connection		
<b>Circle</b>		
Welded construction, heat-treated, and machined for flatness		
	<i>Standard Circle</i>	<i>Premium Circle</i>
Circle Diameter	1524 mm	1524 mm
Rotation	360 deg.	360 deg.
Surface	Quick-change bronze or nylon wear inserts	Sealed and lubricated roller element slewing bearing
Pinion/Ring-Gear Connection	Adjustable backlash and open for serviceability	No adjustment; fully sealed and lubricated
Drive	Hydraulic motor and worm gear with positive lock	Hydraulic motor and worm gear with positive lock
Slip Clutch	Option	Standard
Circle Side Shift (right and left)	787 mm	787 mm
<b>Moldboard</b>		
High-strength, pre-stressed for higher strength; wear-resistant, high-carbon steel and reversible end bits; blade side-shift wear system includes quick-change replaceable wear inserts and quick-adjust jackscrew system		
Base Length	3.66 m	
Height (measured along arc, including cutting edge)	610 mm	
Thickness	22 mm	

While general information, pictures, and descriptions are provided, some illustrations and text may include product options and accessories NOT AVAILABLE in all regions, and in some countries products and accessories may require modifications or additions to ensure compliance with the local regulations of those countries.

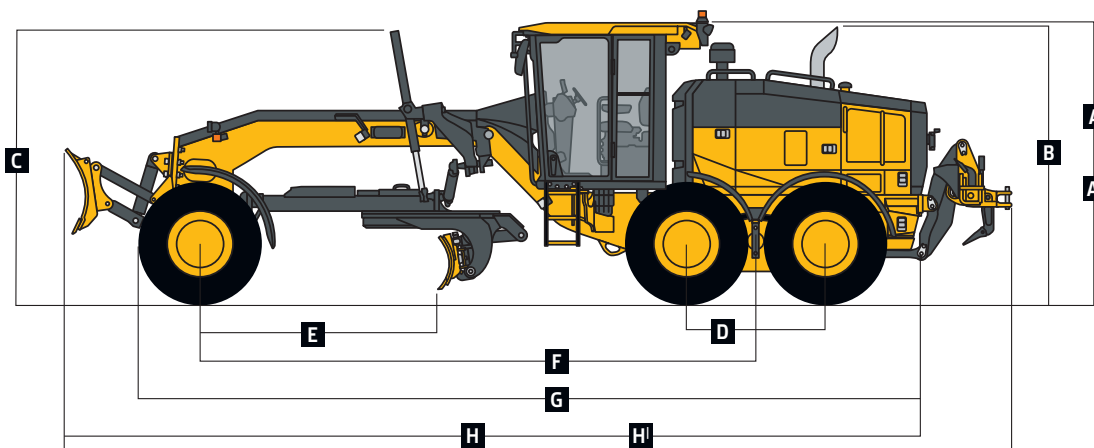
<b>Cutting Edge</b>		<b>672GP</b>
Dura-Max™ through-hardened steel edge		
Thickness	16 mm	
Width	152 mm	
<b>Scarifier</b>		
<i>Mid-mount</i>		
Type	Radial linkage, with NeverGrease™ pin joints; V-type manual 3-pitch position with hydraulic float	
Width of Cut	1.19 m	
Number of Shanks/Teeth	11	
Lift Above Ground	335 mm	
Maximum Depth	325 mm	
Shank		
Spacing	117 mm	
Size	25 x 76 mm	
<b>Front Dozer Blade</b>		
Parallel linkage, hydraulic float		
Lift Above Ground	706 mm	
<b>Rear Ripper/Scarifier</b>		
Parallel linkage, with NeverGrease pin joints, hydraulic float, and integrated hitch		
		<i>Ripper</i>
		<i>Scarifier</i>
Width of Cut	2.21 m	2.18 m
Number of Shanks/Teeth	3 (maximum capacity 5)	None standard (maximum capacity 9)
Lift Above Ground	602 mm	810 mm
Maximum Depth	426 mm	323 mm
Force		
Penetration	9866 kg	—
Pry-Out	13 526 kg	—
Shank Size	61.5 x 133 mm	25 x 76 mm
<b>Operator Station</b>		
Low-profile cab with ROPS (ISO 3471-2008) and FOPS (ISO 3449-2005)		
<b>Tires/Wheels</b>		
		<i>14R24 on 254-mm Rim</i>
		<i>17.5R25 on 356-mm Rim</i>
Wheel Tread on Ground	2.08 m	2.16 m
Overall Width	2.49 m	2.64 m
Ground Clearance (front axle)	587 mm	587 mm
<b>Serviceability</b>		
<b>Refill Capacities</b>		
Fuel Tank	416.5 L	
Diesel Exhaust Fluid (DEF) Tank	22.5 L	
Cooling System	55.0 L	
Engine Oil With Filter	28.4 L	
Transmission Fluid	28.4 L	
Differential Housing	38.0 L	
Tandem Housings (each)	74.0 L	
Circle Gearbox	5.7 L	
Hydraulic Reservoir	60.5 L	
<b>Operating Weights</b>		
With Full Fuel Tank, 3.66-m x 610-mm x 22-mm Moldboard With 152-mm x 16-mm Cutting Edges, 14R24 L2 Tires, and 79-kg Operator		
Front	4821 kg	
Rear	12 295 kg	
Total	17 116 kg	
Typical Operating Weight With Front Dozer Blade, Rear Ripper/Scarifier, and Other Equipment		
Front	5938 kg	
Rear	14 197 kg	
Total	20 135 kg	
Maximum Operating Weight	24 948 kg	

While general information, pictures, and descriptions are provided, some illustrations and text may include product options and accessories NOT AVAILABLE in all regions, and in some countries products and accessories may require modifications or additions to ensure compliance with the local regulations of those countries.

Option Weights	672GP
Moldboards With Through-Hardened Dura-Max Cutting Edge	
3.66 m x 610 mm x 22 mm With 152-mm x 16-mm Cutting Edge and 16-mm Hardware	0 kg
3.66 m x 610 mm x 22 mm With 203-mm x 19-mm Cutting Edge and 16-mm Hardware	45 kg
4.27 m x 610 mm x 22 mm With 152-mm x 16-mm Cutting Edge and 16-mm Hardware	105 kg
4.27 m x 610 mm x 22 mm With 203-mm x 19-mm Cutting Edge and 16-mm Hardware	157.4 kg
4.27 m x 686 mm x 25 mm With 203-mm x 19-mm Cutting Edge and 16-mm Hardware	251 kg
4.27 m x 686 mm x 25 mm With 203-mm x 19-mm Cutting Edge and 19-mm Hardware	261 kg
Extensions, 610 mm (right or left)	
For Use With 610-mm Moldboards	116 kg
For Use With 686-mm Moldboards	120 kg
Overlay End Bits, Reversible (one pair)	
For 152-mm Cutting Edge	19.5 kg
For 203-mm Cutting Edge	23 kg
Heavy-Duty Dual-Input Circle-Drive Gearbox	14 kg
Circle-Drive Slip Clutch	9 kg
Circle	
Standard	0 kg
Premium	289 kg
Moldboard Impact-Absorption System	43 kg
Ripper/Scarifier, Rear Mounted With Hitch and Ripper Shanks (3)	1139 kg
Scarifier Shanks With Teeth (9 for rear ripper/scarifier)	68 kg
Ripper Shanks and Teeth (2)	63 kg
Rear Counterweight With Integral Rear Hitch	727 kg
<b>Machine Dimensions</b>	
<b>A</b> Height to Top of Cab	3.18 m
<b>A'</b> Height to Top of Full-Height Cab	3.40 m
<b>B</b> Height to Top of Exhaust	3.10 m
<b>C</b> Height to Top of Blade-Lift Cylinders	3.05 m
<b>D</b> Tandem Axle Spacing	1.54 m
<b>E</b> Blade Base	2.57 m

Option Weights (continued)	672GP
Rear Hitch	54.4 kg
Push Block, Front	1338 kg
Scarifier, Mid-Mount With Teeth (11)	1481 kg
Front Dozer Blade	1039 kg
Tires	
14.00-24, 12 PR G2	-220.4 kg
17.5-25, 12 PR G2/L2	-106 kg
14.00-R24, Radial, G2/L2 General Purpose	0 kg
14.00-R24, Radial, G2/L2 Snow	40.8 kg
17.5-R25, Radial, L2 General Purpose	51.7 kg
17.5-R25, Radial, G2/L2 Snow	95.3 kg
17.5-R25, Radial, G3/L3 General Purpose	141.5 kg
Multi-Piece Rims	
254 mm x 610 mm	0 kg
356 mm x 635 mm	85.3 kg
Fenders	
Front	99 kg
Rear	141 kg
Low Cab With Opening Front and Side Windows	14.5 kg
Premium Air-Suspension, Heated Seat With Adjustable Arm- and Headrests	13 kg
Coolant Heater	4 kg
Quick Service	11 kg
Secondary Steering	26 kg
Beacon Bracket	8 kg
Fire Extinguisher	14.5 kg
Lighting Packages - 16 LED Lights	7 kg
Front and Rear Light Bar Extensions	48 kg
Auxiliary Hydraulic Control Valve Section and Controls	7 kg
Hydraulics for Front-Mounted Equipment	9 kg
<b>Machine Dimensions (continued)</b>	
<b>F</b> Wheelbase	6.16 m
<b>G</b> Overall Length	8.89 m
<b>H</b> Overall Length With Push Block and Ripper	9.99 m
<b>H'</b> Overall Length With Front-Mounted Blade and Ripper	10.60 m

For Overall Width see Tires/Wheels on page 20.





# 772GP SPECIFICATIONS

<b>Engine</b>	<b>772GP</b>		
Manufacturer and Model	John Deere PowerTech™ PSS 9.0L		
Non-Road Emission Standard	EU Stage V		
Cylinders	6		
Displacement	9.0L		
Net Engine Power			
Gear 1	164 kW		
Gear 2	172 kW		
Gear 3	183 kW		
Gear 4	187 kW		
Gear 5	194 kW		
Gear 6	201 kW		
Gear 7	205 kW		
Gear 8	205 kW*		
Net Peak Torque	1379 Nm		
Net Torque Rise	50%		
Engine Bore and Stroke	118 x 136 mm		
Aspiration	Series turbocharged, charge-air cooled		
Lubrication	Full-flow spin-on filter and integral cooler		
Air Cleaner With Restriction Indicator	Dual element, dry		
<i>*6WD not available.</i>			
<b>Cooling</b>			
Engine Coolant, Extended Life, Rating	-37 deg. C		
<b>Powertrain</b>			
<b>6-Wheel Drive</b>	Automatic dual-path hydrostatic drive; increases tractive effort and front-end control; includes separate left and right systems with variable-displacement pumps, axial-piston wheel motors, and freewheel at transport speeds; operator-selectable 15-position rotary aggressiveness control and inching capability down to 0 mph; precision mode (propelled by front wheels only)		
Effective Gears	1-7 forward and reverse		
Precision Mode			
Effective Gears	1-3 forward only		
Operating Speeds	0.4-8.0 km/h		
Hydrostatic Pumps (2 each)	60 cm <sup>3</sup>		
Wheel Motors	60 cm <sup>3</sup>		
Final Reduction	38.7:1		
<b>Transmission</b>	Direct-drive John Deere PowerShift Plus™, modulated shift-on-the-go, Event-Based Shifting (EBS), inching pedal; independent transmission reservoir with separate filtration and cooling system with 117-L/min. gear pump		
Gears			
Forward	8		
Reverse	8		
<b>Maximum Travel Speeds</b>	<i>No tire slip at 2,180 rpm, 14R24 tires</i>	<b>Maximum Travel Speeds (continued)</b> <i>No tire slip at 2,180 rpm, 14R24 tires</i>	
Gear 1	4.0 km/h	Gear 5	16.4 km/h
Gear 2	5.6 km/h	Gear 6	23.2 km/h
Gear 3	7.7 km/h	Gear 7	32.3 km/h
Gear 4	10.9 km/h	Gear 8	45.5 km/h*
<i>*Maximum speed may be reduced for specific regions.</i>			
<b>Front Axle</b>	Heavy-duty welded fabrication		
Oscillation (total)	32 deg.		
Wheel Lean Angle (each direction)	20 deg.		
<b>Differentials</b>	Spiral bevel; hydraulically actuated, clutch type can be applied on-the-go; selectable manual or automatic differential lock		
<b>Steering (all models include steering wheel)</b>	All-hydraulic power-frame articulation for maneuverability and productivity; crab steering reduces side drift, positions tandems on firm ground, and increases side-slope stability; automated return-to-straight feature		
Turning Radius (front steer and articulation)	7.21 m		
Articulation (both right and left)	22 deg.		
<b>Final Drives</b>	Inboard-mounted planetary sealed in cooled, filtered oil		
<b>Brakes</b>	Foot-controlled, hydraulically operated, multiple wet-disc brakes sealed in pressurized, cooled, filtered oil; both independent systems effective on all 4 tandem wheels		
Primary and Secondary Brakes	Hydraulically actuated, inboard of tandem pivot, self-adjusting, sealed in cooled and filtered oil, multi-disc (ISO 3450)		
Parking Brake	Automatically spring applied, hydraulically released, oil cooled, self-adjusting (ISO 3450)		

While general information, pictures, and descriptions are provided, some illustrations and text may include product options and accessories NOT AVAILABLE in all regions, and in some countries products and accessories may require modifications or additions to ensure compliance with the local regulations of those countries.

# 772GP SPECIFICATIONS



<b>Hydraulics</b>		<b>772GP</b>
Type	Closed-center, pressure-compensated load-sensing (PCLS), variable-displacement piston pump	
Maximum Pump Flow	212 L/min.	
Maximum System Pressure	18 961 kPa	
Pump Displacement	90 cm <sup>3</sup>	
<b>Blade Function</b>		
All-hydraulic, industry-standard lever placement of blade-function controls; includes float position; 7 discrete saddle positions		
<b>Blade Range</b>		
Lift Above Ground	490 mm	
Blade Side Shift (right or left)	678 mm	
Pitch at Ground Line		
Forward	42 deg.	
Back	5 deg.	
Shoulder Reach Outside Wheels (frame straight, right or left)	2048 mm	
Bank Cut Angle (right or left)	90 deg.	
<b>Blade Pull</b>		
At Maximum Operating Weight	22 453 kg	
<b>Electrical</b>		
Solid-state load center and sealed-switch module		
Voltage	24 volt	
Number of Batteries	2	
Battery Capacity	1,400 CCA	
Reserve Capacity	440 min.	
Amp-Hour Rating	224 amp-hour	
Alternator Rating	200 amp	
<b>Lights</b>	Driving lights; high- and low-beam LED headlights; front and rear LED turn signals and marker lights; LED brake and hazard warning lights	
<b>Mainframe</b>		
Type	Welded box construction	
Width (minimum)	307 mm	
Height (minimum)	307 mm	
Thickness		
Side	16 mm	
Top and Bottom Plate	23 mm	
Modulus		
Minimum Vertical Section	1770 cm <sup>3</sup>	
Average Vertical Section at Saddle	2245 cm <sup>3</sup>	
<b>Draft Frame (drawbar)</b>		
Welded box construction machined for flatness and double ball-and-socket pivot connection		
<b>Circle</b>		
Welded construction, heat-treated, and machined for flatness		
	<i>Standard Circle</i>	<i>Premium Circle</i>
Circle Diameter	1524 mm	1524 mm
Rotation	360 deg.	360 deg.
Surface	Quick-change bronze or nylon wear inserts	Sealed and lubricated roller element slewing bearing
Pinion/Ring-Gear Connection	Adjustable backlash and open for serviceability	No adjustment; fully sealed and lubricated
Drive	Hydraulic motor and worm gear with positive lock	Hydraulic motor and worm gear with positive lock
Slip Clutch	Option	Standard
Circle Side Shift (right and left)	787 mm	787 mm
<b>Moldboard</b>		
High-strength, pre-stressed for higher strength, wear-resistant, high-carbon steel and reversible end bits; blade side-shift wear system includes quick-change replaceable wear inserts and quick-adjust jackscrew system		
Base Length	3.66 m	
Height (measured along arc, including cutting edge)	610 mm	
Thickness	22 mm	

While general information, pictures, and descriptions are provided, some illustrations and text may include product options and accessories NOT AVAILABLE in all regions, and in some countries products and accessories may require modifications or additions to ensure compliance with the local regulations of those countries.

# 772GP

<b>Cutting Edge</b>		<b>772GP</b>		
Dura-Max™ through-hardened steel edge				
Thickness	16 mm			
Width	152 mm			
<b>Scarifier</b>				
<i>Mid-mount</i>				
Type	Radial linkage, with NeverGrease™ pin joints; V-type manual 3-pitch position with hydraulic float			
Width of Cut	1.19 m			
Number of Shanks/Teeth	11			
Lift Above Ground	335 mm			
Maximum Depth	325 mm			
Shank				
Spacing	117 mm			
Size	25 x 76 mm			
<b>Front Dozer Blade</b>				
Parallel linkage, hydraulic float				
Lift Above Ground	706 mm			
<b>Rear Ripper/Scarifier</b>				
Parallel linkage, with NeverGrease pin joints, hydraulic float, and integrated hitch				
		<i>Ripper</i>	<i>Scarifier</i>	
Width of Cut	2.21 m	2.18 m		
Number of Shanks/Teeth	3 (maximum capacity 5)	None standard (maximum capacity 9)		
Lift Above Ground	602 mm	810 mm		
Maximum Depth	426 mm	323 mm		
Force				
Penetration	10 010 kg	—		
Pry-Out	14 192 kg	—		
Shank Size	61.5 x 133 mm	25 x 76 mm		
<b>Operator Station</b>				
Low-profile cab with ROPS (ISO 3471-2008) and FOPS (ISO 3449-2005)				
<b>Tires/Wheels</b>				
		<i>14R24 on 254-mm Rim</i>	<i>17.5R25 on 356-mm Rim</i>	<i>550/65R25 on 432-mm Rim</i>
Wheel Tread on Ground	2.08 m	2.16 m	2.21 m	
Overall Width	2.49 m	2.64 m	2.82 m	
Ground Clearance (front axle)	587 mm	587 mm	612 mm	
<b>Serviceability</b>				
<b>Refill Capacities</b>				
Fuel Tank	416.5 L			
Diesel Exhaust Fluid (DEF) Tank	22.5 L			
Cooling System	55.0 L			
Engine Oil With Filter	28.4 L			
Transmission Fluid	28.4 L			
Differential Housing	38.0 L			
Tandem Housings (each)	74.0 L			
Circle Gearbox	5.7 L			
Hydraulic Reservoir	60.5 L			
<b>Operating Weights</b>				
With Full Fuel Tank, 3.66-m x 610-mm x 22-mm Moldboard With 152-mm x 16-mm Cutting Edges, 14R24 L2 Tires, and 79-kg Operator				
Front	4921 kg			
Rear	12 581 kg			
Total	17 502 kg			
Typical Operating Weight With Front Dozer Blade, Rear Ripper/Scarifier, and Other Equipment				
Front	6230 kg			
Rear	14 404 kg			
Total	20 634 kg			
Maximum Operating Weight	24 948 kg			

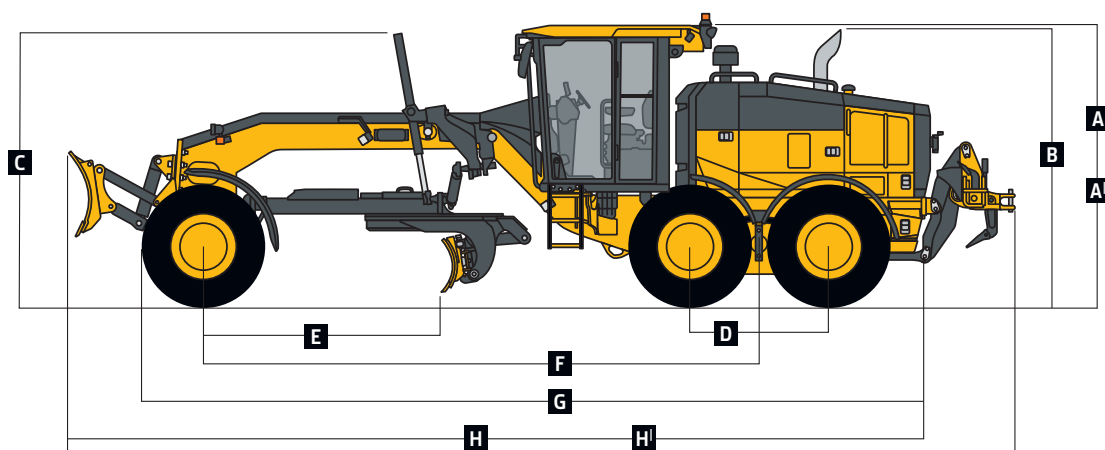
While general information, pictures, and descriptions are provided, some illustrations and text may include product options and accessories NOT AVAILABLE in all regions, and in some countries products and accessories may require modifications or additions to ensure compliance with the local regulations of those countries.



Option Weights	772GP
Moldboards With Through-Hardened Dura-Max Cutting Edge	
3.66 m x 610 mm x 22 mm With 152-mm x 16-mm Cutting Edge and 16-mm Hardware	0 kg
3.66 m x 610 mm x 22 mm With 203-mm x 19-mm Cutting Edge and 16-mm Hardware	45 kg
4.27 m x 610 mm x 22 mm With 152-mm x 16-mm Cutting Edge and 16-mm Hardware	105 kg
4.27 m x 610 mm x 22 mm With 203-mm x 19-mm Cutting Edge and 16-mm Hardware	157.4 kg
4.27 m x 686 mm x 25 mm With 203-mm x 19-mm Cutting Edge and 16-mm Hardware	251 kg
4.27 m x 686 mm x 25 mm With 203-mm x 19-mm Cutting Edge and 19-mm Hardware	261 kg
Extensions, 610 mm (right or left)	
For Use With 610-mm Moldboards	116 kg
For Use With 686-mm Moldboards	120 kg
Overlay End Bits, Reversible (one pair)	
For 152-mm Cutting Edge	19.5 kg
For 203-mm Cutting Edge	23 kg
Heavy-Duty Dual-Input Circle-Drive Gearbox	14 kg
Circle-Drive Slip Clutch	9 kg
Circle	
Standard	0 kg
Premium	289 kg
Moldboard Impact-Absorption System	43 kg
Ripper/Scarifier, Rear Mounted With Hitch and Ripper Shanks (3)	1139 kg
Scarifier Shanks With Teeth (9 for rear ripper/scarifier)	68 kg
Ripper Shanks and Teeth (2)	63 kg
Rear Counterweight With Integral Rear Hitch	727 kg
Rear Hitch	54.4 kg
<b>Machine Dimensions</b>	
<b>A</b> Height to Top of Cab	3.18 m
<b>A'</b> Height to Top of Full-Height Cab	3.40 m
<b>B</b> Height to Top of Exhaust	3.10 m
<b>C</b> Height to Top of Blade-Lift Cylinders	3.05 m
<b>D</b> Tandem Axle Spacing	1.54 m
<b>E</b> Blade Base	2.57 m

Option Weights (continued)	772GP
Push Block, Front	1338 kg
Scarifier, Mid-Mount With Teeth (11)	1481 kg
Front Dozer Blade	1039 kg
Tires	
14.00-24, 12 PR G2	-220.4 kg
17.5-25, 12 PR G2/L2	-106 kg
14.00-R24, Radial, G2/L2 General Purpose	0 kg
14.00-R24, Radial, G2/L2 Snow	40.8 kg
17.5-R25, Radial, L2 General Purpose	51.7 kg
17.5-R25, Radial, G2/L2 Snow	95.3 kg
17.5-R25, Radial, G3/L3 General Purpose	141.5 kg
550/65R25 XLD70 G3/L3 Radial, General Purpose	495.3 kg
Multi-Piece Rims	
254 mm x 610 mm	0 kg
356 mm x 635 mm	85.3 kg
432 mm x 635 mm	131.6 kg
Fenders	
Front	99 kg
Rear	141 kg
Low Cab With Opening Front and Side Windows	14.5 kg
Premium Air-Suspension, Heated Seat With Adjustable Arm- and Headrests	13 kg
Coolant Heater	4 kg
Quick Service	11 kg
Secondary Steering	26 kg
Beacon Bracket	8 kg
Fire Extinguisher	14.5 kg
Lighting Packages - 16 LED Lights	7 kg
Front and Rear Light Bar Extensions	48 kg
Auxiliary Hydraulic Control Valve Section and Controls	7 kg
Hydraulics for Front-Mounted Equipment	9 kg
<b>Machine Dimensions (continued)</b>	
<b>F</b> Wheelbase	6.16 m
<b>G</b> Overall Length	8.89 m
<b>H</b> Overall Length With Push Block and Ripper	9.99 m
<b>H'</b> Overall Length With Front-Mounted Blade and Ripper	10.60 m

For Overall Width see Tires/Wheels on page 24.





# 872GP SPECIFICATIONS

<b>Engine</b>	<b>872GP</b>		
Manufacturer and Model	John Deere PowerTech™ PSS 9.0L		
Non-Road Emission Standard	EU Stage V		
Cylinders	6		
Displacement	9.0L		
Net Engine Power			
Gear 1	183 kW		
Gear 2	190 kW		
Gear 3	201 kW		
Gear 4	205 kW		
Gear 5	212 kW		
Gear 6	220 kW		
Gear 7	224 kW		
Gear 8	224 kW*		
Net Peak Torque	1472 Nm		
Net Torque Rise	46%		
Engine Bore and Stroke	118 x 136 mm		
Aspiration	Series turbocharged, charge-air cooled		
Lubrication	Full-flow spin-on filter and integral cooler		
Air Cleaner With Restriction Indicator	Dual element, dry		
*6WD not available.			
<b>Cooling</b>			
Engine Coolant, Extended Life, Rating	-37 deg. C		
<b>Powertrain</b>			
<b>6-Wheel Drive</b>	Automatic dual-path hydrostatic drive; increases tractive effort and front-end control; includes separate left and right systems with variable-displacement pumps, axial-piston wheel motors, and freewheel at transport speeds; operator-selectable 15-position rotary aggressiveness control and inching capability down to 0 mph; precision mode (propelled by front wheels only)		
Effective Gears	1-7 forward and reverse		
Precision Mode			
Effective Gears	1-3 forward only		
Operating Speeds	0.4-8.0 km/h		
Hydrostatic Pumps (2 each)	60 cm <sup>3</sup>		
Wheel Motors	60 cm <sup>3</sup>		
Final Reduction	38.7:1		
<b>Transmission</b>	Direct-drive John Deere PowerShift Plus™, modulated shift-on-the-go, Event-Based Shifting (EBS), inching pedal; independent transmission reservoir with separate filtration and cooling system with 121-L/min. gear pump		
Gears			
Forward	8		
Reverse	8		
<b>Maximum Travel Speeds</b>	<i>No tire slip at 2,180 rpm, 17.5-R25 tires</i>	<b>Maximum Travel Speeds (continued)</b>	<i>No tire slip at 2,180 rpm, 17.5-R25 tires</i>
Gear 1	4.0 km/h	Gear 5	16.7 km/h
Gear 2	5.6 km/h	Gear 6	23.2 km/h
Gear 3	7.9 km/h	Gear 7	32.1 km/h
Gear 4	10.9 km/h	Gear 8	45.0 km/h*
*Maximum speed may be reduced for specific regions.			
<b>Front Axle</b>	Heavy-duty welded fabrication		
Oscillation (total)	32 deg.		
Wheel Lean Angle (each direction)	20 deg.		
<b>Differentials</b>	Spiral bevel; hydraulically actuated, clutch type can be applied on-the-go; selectable manual or automatic differential lock		
<b>Steering (all models include steering wheel)</b>	All-hydraulic power-frame articulation for maneuverability and productivity; crab steering reduces side drift, positions tandems on firm ground, and increases side-slope stability; automated return-to-straight feature		
Turning Radius (front steer and articulation)	7.21 m		
Articulation (both right and left)	22 deg.		
<b>Final Drives</b>	Inboard-mounted planetary sealed in cooled, filtered oil		
<b>Brakes</b>	Foot-controlled, hydraulically operated, multiple wet-disc brakes sealed in pressurized, cooled, filtered oil; both independent systems effective on all 4 tandem wheels		
Primary and Secondary Brakes	Hydraulically actuated, inboard of tandem pivot, self-adjusting, sealed in cooled and filtered oil, multi-disc (ISO 3450)		
Parking Brake	Automatically spring applied, hydraulically released, oil cooled, self-adjusting (ISO 3450)		

While general information, pictures, and descriptions are provided, some illustrations and text may include product options and accessories NOT AVAILABLE in all regions, and in some countries products and accessories may require modifications or additions to ensure compliance with the local regulations of those countries.

# 872GP SPECIFICATIONS



<b>Hydraulics</b>		<b>872GP</b>
Type	Closed-center, pressure-compensated load-sensing (PCLS), variable-displacement piston pump	
Maximum Pump Flow	218 L/min.	
Maximum System Pressure	18 961 kPa	
Pump Displacement	90 cm <sup>3</sup>	
<b>Blade Function</b>		
All-hydraulic, industry-standard lever placement of blade-function controls; includes float position; 7 discrete saddle positions		
<b>Blade Range</b>		
Lift Above Ground	452 mm	
Blade Side Shift (right or left)	678 mm	
Pitch at Ground Line		
Forward	42 deg.	
Back	5 deg.	
Shoulder Reach Outside Wheels (frame straight, right or left)	2320 mm	
Bank Cut Angle (right or left)	90 deg.	
<b>Blade Pull</b>		
At Maximum Operating Weight	22 453 kg	
<b>Electrical</b>		
Solid-state load center and sealed-switch module		
Voltage	24 volt	
Number of Batteries	2	
Battery Capacity	1,400 CCA	
Reserve Capacity	440 min.	
Amp-Hour Rating	224 amp-hour	
Alternator Rating	200 amp	
<b>Lights</b>	Driving lights; high- and low-beam LED headlights; front and rear LED turn signals and marker lights; LED brake and hazard warning lights	
<b>Mainframe</b>		
Type	Welded box construction	
Width (minimum)	307 mm	
Height (minimum)	307 mm	
Thickness		
Side	16 mm	
Top and Bottom Plate	30 mm	
Modulus		
Minimum Vertical Section	1770 cm <sup>3</sup>	
Average Vertical Section at Saddle	2635 cm <sup>3</sup>	
<b>Draft Frame (drawbar)</b>		
Welded box construction machined for flatness and double ball-and-socket pivot connection		
<b>Circle</b>		
Welded construction, heat-treated, and machined for flatness		
	<i>Standard Circle</i>	<i>Premium Circle</i>
Circle Diameter	1524 mm	1524 mm
Rotation	360 deg.	360 deg.
Surface	Quick-change bronze or nylon wear inserts	Sealed and lubricated roller element slewing bearing
Pinion/Ring-Gear Connection	Adjustable backlash and open for serviceability	No adjustment; fully sealed and lubricated
Drive	Hydraulic motor and worm gear with positive lock	Hydraulic motor and worm gear with positive lock
Slip Clutch	Option	Standard
Circle Side Shift (right and left)	787 mm	787 mm
<b>Moldboard</b>		
High-strength, pre-stressed for higher strength, wear-resistant, high-carbon steel and reversible end bits; blade side-shift wear system includes quick-change replaceable wear inserts and quick-adjust jackscrew system		
Base Length	4.27 m	
Height (measured along arc, including cutting edge)	686 mm	
Thickness	25 mm	

While general information, pictures, and descriptions are provided, some illustrations and text may include product options and accessories NOT AVAILABLE in all regions, and in some countries products and accessories may require modifications or additions to ensure compliance with the local regulations of those countries.

# 872GP

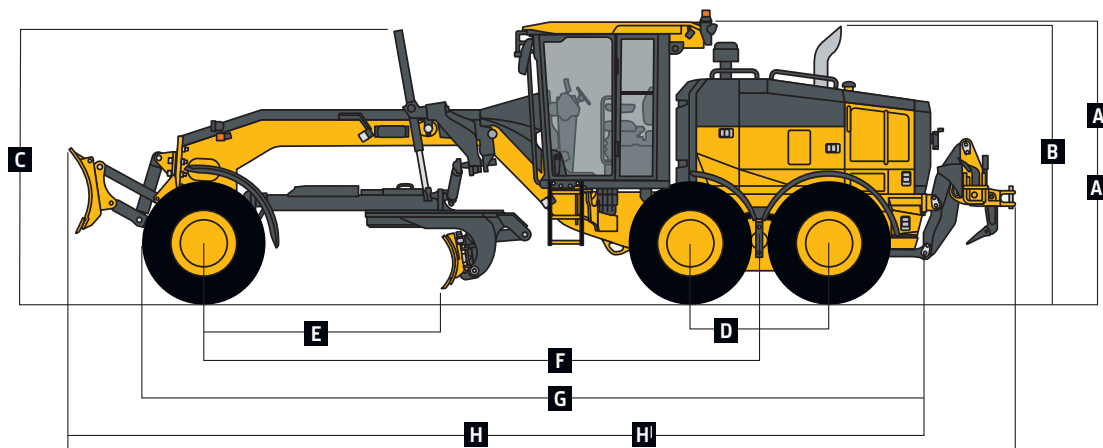
<b>Cutting Edge</b>		<b>872GP</b>	
Dura-Max™ through-hardened steel edge			
Thickness	19 mm		
Width	203 mm		
<b>Scarifier</b>			
<i>Mid-mount</i>			
Type	Radial linkage, with NeverGrease™ pin joints; V-type manual 3-pitch position with hydraulic float		
Width of Cut	1.19 m		
Number of Shanks/Teeth	11		
Lift Above Ground	335 mm		
Maximum Depth	325 mm		
Shank			
Spacing	117 mm		
Size	25 x 76 mm		
<b>Front Dozer Blade</b>			
Parallel linkage, hydraulic float			
Lift Above Ground	706 mm		
<b>Rear Ripper/Scarifier</b>			
Parallel linkage, with NeverGrease pin joints, hydraulic float, and integrated hitch			
	<i>Ripper</i>	<i>Scarifier</i>	
Width of Cut	2.21 m	2.18 m	
Number of Shanks/Teeth	3 (maximum capacity 5)	None standard (maximum capacity 9)	
Lift Above Ground	602 mm	810 mm	
Maximum Depth	426 mm	323 mm	
Force			
Penetration	10 481 kg	—	
Pry-Out	14 632 kg	—	
Shank Size	61.5 x 133 mm	25 x 76 mm	
<b>Operator Station</b>			
Low-profile cab with ROPS (ISO 3471-2008) and FOPS (ISO 3449-2005)			
<b>Tires/Wheels</b>			
	<i>17.5R25 on 356-mm Rim</i>	<i>550/65R25 on 432-mm Rim</i>	<i>20.5R25 on 432-mm Rim</i>
Wheel Tread on Ground	2.16 m	2.21 m)	2.32 m
Overall Width	2.64 m	2.82 m	2.80 m
Ground Clearance (front axle)	587 mm	612 mm	640 mm
<b>Serviceability</b>			
<b>Refill Capacities</b>			
Fuel Tank	416.5 L		
Diesel Exhaust Fluid (DEF) Tank	22.5 L		
Cooling System	55.0 L		
Engine Oil With Filter	28.4 L		
Transmission Fluid	28.4 L		
Differential Housing	38.0 L		
Tandem Housings (each)	74.0 L		
Circle Gearbox	5.7 L		
Hydraulic Reservoir	60.5 L		
<b>Operating Weights</b>			
With Full Fuel Tank, 4.27-m x 686-mm x 25-mm Moldboard With 203-mm x 19-mm Cutting Edges, 17.5R25 L2 Tires, and 79-kg Operator			
Front	5094 kg		
Rear	12 891 kg		
Total	17 985 kg		
Typical Operating Weight With Front Dozer Blade, Rear Ripper/Scarifier, and Other Equipment			
Front	6423 kg	6573 kg	
Rear	15 082 kg	14 152 kg	
Total	21 505 kg	20 725 kg	
Maximum Operating Weight	24 948 kg	24 948 kg	

While general information, pictures, and descriptions are provided, some illustrations and text may include product options and accessories NOT AVAILABLE in all regions, and in some countries products and accessories may require modifications or additions to ensure compliance with the local regulations of those countries.

Option Weights	872GP
Moldboards With Through-Hardened Dura-Max Cutting Edge	
4.27 m x 686 mm x 25 mm With 203-mm x 19-mm Cutting Edge and 16-mm Hardware	0 kg
4.27 m x 686 mm x 25 mm With 203-mm x 19-mm Cutting Edge and 19-mm Hardware	9.5 kg
4.88 m x 686 mm x 25 mm With 203-mm x 19-mm Cutting Edge and 19-mm Hardware	137 kg
Extensions, 610 mm (right or left)	
For Use With 686-mm Moldboards	120 kg
Overlay End Bits, Reversible (one pair)	
For 203-mm Cutting Edge	23 kg
Heavy-Duty Dual-Input Circle-Drive Gearbox	14 kg
Circle-Drive Slip Clutch	9 kg
Circle	
Standard	0 kg
Premium	289 kg
Moldboard Impact-Absorption System	43 kg
Ripper/Scarifier, Rear Mounted With Hitch and Ripper Shanks (3)	1139 kg
Scarifier Shanks With Teeth (9 for rear ripper/scarifier)	68 kg
Ripper Shanks and Teeth (2)	63 kg
Rear Counterweight With Integral Rear Hitch	727 kg
Rear Hitch	54.4 kg
Push Block, Front	1338 kg
<b>Machine Dimensions</b>	
<b>A</b> Height to Top of Cab	3.18 m
<b>A'</b> Height to Top of Full-Height Cab	3.40 m
<b>B</b> Height to Top of Exhaust	3.10 m
<b>C</b> Height to Top of Blade-Lift Cylinders	3.05 m
<b>D</b> Tandem Axle Spacing	1.54 m
<b>E</b> Blade Base	2.57 m

Option Weights (continued)	872GP
Scarifier, Mid-Mount With Teeth (11)	1481 kg
Front Dozer Blade	1039 kg
Tires	
17.5-R25, Radial, L2 General Purpose	0 kg
17.5-R25, Radial, G2/L2 Snow	43.5 kg
17.5-R25, Radial, G3/L3 General Purpose	90 kg
550/65R25 XLD70 G3/L3 Radial, General Purpose	444 kg
20.5-R25, Radial, L2 Snow	414 kg
20.5-R25, Radial, L2 General Purpose	474 kg
Multi-Piece Rims	
356 mm x 635 mm	0 kg
432 mm x 635 mm	46 kg
Fenders	
Front	99 kg
Rear	141 kg
Low Cab With Opening Front and Side Windows	14.5 kg
Premium Air-Suspension, Heated Seat With Adjustable Arm- and Headrests	13 kg
Coolant Heater	4 kg
Quick Service	11 kg
Secondary Steering	26 kg
Beacon Bracket	8 kg
Fire Extinguisher	14.5 kg
Lighting Packages – 16 LED Lights	7 kg
Front and Rear Light Bar Extensions	48 kg
Auxiliary Hydraulic Control Valve Section and Controls	7 kg
Hydraulics for Front-Mounted Equipment	9 kg
<b>Machine Dimensions (continued)</b>	
<b>F</b> Wheelbase	6.16 m
<b>G</b> Overall Length	8.89 m
<b>H</b> Overall Length With Push Block and Ripper	9.99 m
<b>H'</b> Overall Length With Front-Mounted Blade and Ripper	10.60 m

For Overall Width see Tires/Wheels on page 28.



# Additional equipment

Key: ● Standard ▲ Optional or special See your John Deere dealer for further information.

622	672	772	872	Operator's Station
●	●	●	●	Low-profile ROPS/FOPS cab with HVAC (ROPS ISO 3471 / FOPS SAE 3449 Level II)
●	●	●	●	Low-profile GP cab with opening lower front and side windows
▲	▲	▲	▲	Low-profile GP cab utilizing laminated glass with fixed lower front and side opening windows
●	●	●	●	Keyless start with multiple security modes
●	●	●	●	Premium heated, leather/fabric, high-wide-back, air-suspension seat with armrests (standard with Grade Pro)
●	●	●	●	Sealed-switch module with function indicators
●	●	●	●	Electric rear-window defroster
●	●	●	●	Upper front windshield washers with intermittent wipers
▲	●	●	●	Upper rear windshield washers with intermittent wipers
●	●	●	●	Lower front intermittent wiper and washer
▲	▲	▲	▲	Powered cab precleaner
▲	▲	▲	▲	Decelerator pedal
▲	▲	▲	▲	Flip-down, right- and/or left-hand cab beacon with bracket
●	●	●	●	Cab prewired for beacon, radio, and auxiliary circuit
●	●	●	●	Front window sun visor
▲	▲	▲	▲	Retractable rear sunshade
●	●	●	●	Rearview mirrors, exterior (2) (SAE J985)
▲	▲	▲	▲	Heated exterior mirrors (2) (SAE J985)
●	●	●	●	High-resolution rear camera with dedicated in-cab monitor (in some markets)
▲	▲	▲	▲	High-resolution front/rear-camera combination with dedicated in-cab monitor
●	●	●	●	Retractable seat belt, 76 mm (SAE 386)
▲	▲	▲	▲	AM/FM radio with auxiliary and Weather Band (WB)
▲	▲	▲	▲	AM/FM radio with Bluetooth®, auxiliary, and WB ready
●	●	●	●	Push-button-activated cruise control

622	672	772	872	Electrical
●	●	●	●	200-amp alternator
●	●	●	●	Batteries (2), 1,400 CCA with 440-min. reserve capacity
▲	●	●	●	Left-hand engine compartment service-check light
▲	▲	▲	▲	Right-hand engine compartment service-check light
●	●	●	●	Premium grading lights (16 LED lights)
●	●	●	●	Multifunction/multi-language diagnostic LCD color monitor
●	●	●	●	Reverse warning alarm (SAE J994)
●	●	●	●	LED brake and turn lights
				<b>Moldboard</b>
				<b>Patented pre-stressed, high strength, wear resistant:</b>
●	●	●		3.66 m x 610 mm x 22 mm
▲	▲	▲		4.27 m x 610 mm x 22 mm
	▲	▲	●	4.27 m x 686 mm x 25 mm
		▲		4.88 m x 686 mm x 25 mm
●	●	●	●	Quick-change and jackscrew-adjustable moldboard side-shift extreme-duty wear inserts
▲	▲	▲		610-mm left- or right-hand extensions for 610-mm moldboard
		▲	▲	610-mm left- or right-hand extensions for 686-mm moldboard
▲	▲	▲	▲	Reversible overlay endbits
				<b>Overall Vehicle</b>
●	●	●	●	JDLink™ wireless communication system (available in specific countries; see your dealer for details)
●	●	●	●	Ground-level fuel and diesel exhaust fluid (DEF) filling
▲	●	●	●	Fluid-sampling ports for engine oil and coolant, hydraulic oil, and axle and transmission fluids
●	●	●	●	Vandal-protection locking for: Cab doors / Top tank radiator-access door / Engine coolant surge tank / Hydraulic reservoir cap / Battery-disconnect switch / Ground-level electrical master disconnect switch / Fuel-tank door and cap / Toolbox

While general information, pictures, and descriptions are provided, some illustrations and text may include product options and accessories NOT AVAILABLE in all regions, and in some countries products and accessories may require modifications or additions to ensure compliance with the local regulations of those countries.

Net engine power is with standard equipment including air cleaner, exhaust system, alternator, and cooling fan at test conditions specified per ISO9249. No derating is required up to 3050-m altitude. Specifications and design subject to change without notice. Wherever applicable, specifications are in accordance with SAE standards. Except where otherwise noted, these specifications are based on units with standard equipment; 14 R 24 L2 Radial tires on 254-mm x 610-mm multi-piece rims and 3.66-m x 610-mm x 22-mm high-strength, wear-resistant moldboards with 16-mm x 152-mm Dura-Max® through-hardened-steel cutting edges for the 622GP, 672GP, and 772GP; and 17.5 R 25 L2 Radial tires on 356-mm x 635-mm multi-piece rims and 4.27-m x 686-mm x 25-mm high-strength, wear-resistant moldboards with 19-mm x 203-mm Dura-Max through-hardened-steel cutting edges for the 872GP. Weights include lubricants, coolants, full fuel tanks, and 79-kg operators.

# Additional equipment *(continued)*

Key: ● Standard ▲ Optional or special See your John Deere dealer for further information.

622	672	772	872	Overall Vehicle <i>(continued)</i>
●	●	●	●	Environmental drains with hoses for engine, transmission, hydraulic, differential fluids, and engine coolant
●	●	●	●	Hydraulically driven cool-on-demand reversing fan
●	●	●	●	Banked easy-access vertical spin-on filters for hydraulic, transmission, and axle fluids
●	●	●	●	Engine rotary ejector precleaner
●	●	●	●	Automatic differential lock
●	●	●	●	Engine-stall prevention and auto shutdown
▲	▲	▲	▲	Adjustable rotary engine precleaner
	▲	●	●	Heavy-duty air cleaner
●	●	●		Single-input circle drive
▲	▲	▲		Single-input circle drive with slip clutch
	▲	▲	●	Heavy-duty dual-input circle drive without slip clutch
	▲	▲	▲	Heavy-duty dual-input circle drive with slip clutch
▲	▲	▲	▲	Premium circle
●	●	●	●	Auto-Shift transmission
▲	▲	▲	▲	Auto-Shift PLUS transmission
▲	▲	▲	▲	Blade-impact-absorption system
▲	▲	▲	▲	Front and/or rear wheel fenders
▲	▲	▲	▲	Quick-service bank for transmission, hydraulic, engine oil, and engine coolant fluid changes
●	●	●	●	Secondary steering
▲	▲	▲	▲	Wheel chocks
<b>Automation (standard on SmartGrade™ models, optional on GP models)</b>				
▲	▲	▲	▲	Automation Suite
▲	▲	▲	▲	Auto-Articulation
▲	▲	▲	▲	Auto-Gain for Cross Slope
▲	▲	▲	▲	Auto-Pass
▲	▲	▲	▲	Blade Flip
▲	▲	▲	▲	Machine Presets
▲	▲	▲	▲	Machine-Damage Avoidance

622	672	772	872	Front Attachments
▲	▲	▲	▲	Front push block
▲	▲	▲	▲	Mid-mount scarifier with float position, 11 shanks
▲	▲	▲	▲	Front Balderson-style lift group with float position
▲	▲	▲	▲	Front-mounted dozer blades
<b>Rear Attachments</b>				
●	●	●	●	Full bottom guard with access panel and side guards for rear vehicle protection
▲	▲	▲	▲	Rear-mounted ripper/scarifier combination with rear hitch and pin, 3 ripper shanks
▲	▲	▲	▲	Rear counterweight with rear hitch and pin
▲	▲	▲	▲	Rear hitch and pin
▲	▲	▲	▲	Extra scarifier shanks (9) with teeth for rear ripper scarifier
	▲	▲	▲	Extra ripper shanks (2) with teeth for rear ripper/scarifier
<b>Grade Pro (GP) Option</b>				
●	●	●	●	Low-profile GP cab with opening lower front and side windows
▲	▲	▲	▲	Low-profile GP cab utilizing laminated glass with fixed lower front and side opening windows
●	●	●	●	Premium heated, leather/fabric, high-wide-back, air-suspension seat with armrests
▲	▲	▲	▲	Dual-joystick controls
▲	▲	▲	▲	Fingertip armrest-mounted controls including steering lever
●	●	●	●	Steering wheel
●	●	●	●	Cross slope
●	●	●	●	Return to straight
<b>Grade Control</b>				
▲	▲	▲	▲	SmartGrade
▲	▲	▲	▲	Mast mounts
▲	▲	▲	▲	Topcon ready
▲	▲	▲	▲	Trimble ready

While general information, pictures, and descriptions are provided, some illustrations and text may include product options and accessories NOT AVAILABLE in all regions, and in some countries products and accessories may require modifications or additions to ensure compliance with the local regulations of those countries.

Net engine power is with standard equipment including air cleaner, exhaust system, alternator, and cooling fan at test conditions specified per ISO9249. No derating is required up to 3050-m altitude. Specifications and design subject to change without notice. Wherever applicable, specifications are in accordance with SAE standards. Except where otherwise noted, these specifications are based on units with standard equipment: 14 R 24 L2 Radial tires on 254-mm x 610-mm multi-piece rims and 3.66-m x 610-mm x 22-mm high-strength, wear-resistant moldboards with 16-mm x 152-mm Dura-Max through-hardened-steel cutting edges for the 622GP, 672GP, and 772GP; and 17.5 R 25 L2 Radial tires on 356-mm x 635-mm multi-piece rims and 4.27-m x 686-mm x 25-mm high-strength, wear-resistant moldboards with 19-mm x 203-mm Dura-Max through-hardened-steel cutting edges for the 872GP. Weights include lubricants, coolants, full fuel tanks, and 79-kg operators.



**JOHN DEERE**

[JohnDeere.com/ graders](http://JohnDeere.com/ graders)

IN YOUR WORLD,  
**DECIDE HOW YOUR  
WORK GETS DONE.**

### **Take control with more options**

Inspired by input from customers like you, John Deere G-Series Motor Graders include a host of innovative options like dual-joystick controls and exclusive automation advantages on Grade Pro (GP) models. Factory-integrated SmartGrade™ configurations. And Precision mode on six-wheel-drive machines. The smaller, more economical 620G and 622G deliver practical power at up to 10-percent fuel savings over their larger siblings. We give you the power of choice to match your application. So you can do your work your way.



DKAGGDREU Litho in U.S.A. (21-10)